



## Vegetative Waste Schedule

*Don't treat Christmas trees like trash!*

Please place your Christmas Tree curbside along with your other vegetative waste on your recycling day. Please do not put the tree in a plastic bag and remember to remove any lights, garland and/or ornaments.

## Grass, Brush, and Bagged Leaves

Grass clippings, brush, and bagged leaves will be collected according to your regularly scheduled recycling day. Vegetative waste must

be placed in a paper bag or reusable container. Brush must be bundled and tied in no more than (4) foot lengths and no greater than 2" in diameter. The City will not pick up leaves that are contaminated with trash, grass, branches, stones, paper litter or any other debris.

**NO PLASTIC BAGS.**

Leaf Bags are available to Residents during the months of November and April free of charge based upon availability. Proof of residency is required at time of pick-up. 10 bags maximum per property.

***NO stumps or logs will be collected.***

You may also use "cut it and leave it" to reduce your grass clippings waste.

For more information on "cut it and leave it" please call the Recycling Hotline at 973-321-1393.

## Cardboard

Brown corrugated cardboard boxes must be flattened down, tied in bundles and placed curbside on your recycling day. **Cardboard cannot be waxed or contain garbage of any kind.**

**CARDBOARD: YES** Corrugated

**NO** Gift Boxes Food Boxes Chipboard

**CARTON:** Cajas de color marron deben ser aplastadas, amarradas y colocadas en la acera en el día de reciclaje. Las cajas no pueden contener cera o basura de ninguna clase.

**الكرتون:** الصناديق والعلب الكرتونية الموجهة و المقواه يجب تكسيها وبسطها، ثم تحزيمها ووضعها على حافة الرصيف في اليوم المحدد لجمعها. الكرتون يجب ألا يكون مغطى بطبقة من الشمع أو بها زباله من أي نوع.

## White Goods

Residents must call Recycling Office at 973-321-1393 to arrange pick-up. Refrigerator doors must be removed. White goods must be placed out on the curb.

**WHITE GOODS: YES** Refrigerators Stoves Washers Dryers Dishwashers Freezers Air Conditioners Hot Water Heaters

**NO** Motorcycles Vehicle Parts Furniture

**ELECTRODOMÉSTICOS:** Residentes deben llamar a la Oficina de Reciclaje al 973-321-1393 para fijar el día de recolección. A los refrigeradores se les debe sacar las puertas. Electrodomésticos deben ser colocados en la acera.

**البضائع البيضاء:** البضائع البيضاء يجب أن توضع على جانب الرصيف ثم الاتصال بمكتب تكرير النفايات وإبلاغه لتحديد موعد لجمعها. يجب خلع أبواب الثلاجات.

## Electronics

As a result of new environmental laws, TVs, computers and other electronics can no longer be collected with regular household trash. **Do not put electronics out on your normal garbage pick-up days as it will not be picked up. For TV and Electronics pick up call: 973-321-1393. Recycling Center hours are from 7:30 a.m. to 4:00 p.m.**

You may also bring your recyclables to your Recycling Center located at 231 Lawrence Street.

**Remember, recycling is the law and you may be subject to \$1,000.00 fine for failure to do so.**

Usted puede tambien traer su reciclables a el Centro de Reciclaje ubicado en el 231 de la calle Lawrence.

**Recuerde, reciclar es la ley y usted puede recibir una multa de \$1,000.00 si no la cumple.**



يمكنك أيضاً إحضار النفايات الصالحة للتكرير إلى مركز تجميع النفايات بالمدينة على

العنوان التالي ٢٣١ لورانس ستريت.

تذكر أن تكرير النفايات هو القانون ومخالفة القانون يمكن أن يعرضك إلى غرامه ماليه قدرها ١٠٠٠ \$(ألف دولار).

## Garbage Information

■ The following items are considered garbage:

- Kitchen waste
- Refuse of animal, fish, or vegetable matter
- Non-recyclable containers such as milk cartons or juice boxes
- Rags
- Food contaminated containers, mugs, light bulbs, mirror and porcelain glass
- Plastic bags, tubs, trays and plastic hangers

■ Garbage must be placed in a plastic bag and then into a reuseable container with a lid.

■ Garbage should not contain any recyclable bottles/cans, newspaper, cardboard and/or vegetative waste (grass, leaves, brush).

■ Mattresses or box spring must be completely wrapped in plastic before placing it out for collection.

■ Bulk Collection by appointment only.

**Failure to comply may result in fines. Any questions regarding Garbage Collection please call the Department of Public Works at: 973-321-1488.**

## Clean Communities (Seasonal)

The City of Paterson has a Clean Communities Program to help reduce litter and keep the city clean.

We are seeking volunteer groups to Adopt-a-Spot or Adopt-a-Park to keep that location clean during the year. If anyone is interested in participating in this program, please call **973-321-1393**.

**Contact the Passaic County Office of Solid Waste and Recycling for 2024 Collection Events of household hazardous waste, tires, cooking oil, paint, confidential paper shredding and electronics at 973-305-5738 or go to [www.passaiccountynj.org](http://www.passaiccountynj.org) for more information.**

**Comuníquese con la Oficina del Condado de Passaic de Residuos Sólidos y Reciclaje para los Eventos del 2024 de recolección de residuos domésticos peligrosos, llantas, aceite de cocina, pintura, trituración de papeles confidenciales y electrónicos al 973-305-5738 o visite [www.passaiccountynj.org](http://www.passaiccountynj.org) para obtener más información.**

إتصل بمكتب مقاطعة باسيك للنفايات الصلبة وإعادة التدوير لمواعيد سنة ٢٠٢٤ لجمع النفايات المنزلية الخطرة، الإطارات، زيت

الطهي، الدهان، الورق المقطع والإلكترونيات على الرقم التالي: 973-305-5738 أو زوروا على الموقع التالي:

[www.passaiccountynj.org](http://www.passaiccountynj.org) للحصول على مزيد من المعلومات.

DEPARTMENT OF PUBLIC WORKS  
Recycling Division  
76-80 N. Barclay Street  
Paterson, NJ 07503



ANDRÉ SAYEGH  
Mayor, City of Paterson

## Mayor's Recycling Message

Reducing waste saves both materials and energy. Reducing waste also eliminates the need and expense of solid waste disposal. You can reduce waste by buying items with less packaging and not buying disposable items. Reusing reduces the need to purchase new items and saves resources. Recycling saves raw materials and cuts down on solid waste collection and disposal costs. Paterson residents who participate in the City's successful recycling program are not only helping to save tax dollars but are also working to save our environment. Respect the earth and the environment; recycle so that you can be part of the solution rather than part of the problem. Remember to recycle all white goods and scrap metal. Under the NJ Stormwater Rules and Regulations residents can no longer place leaves/brush onto the street. Leaves/brush must be placed in paper bags and placed curbside for recycling collection on your scheduled recycling day.

Be proud to say, "I recycle!" So remember to practice the 3 R's principle:

***Reduce, Reuse and Recycle!***



@PatersonRecyclingDivision



Paterson Plus  
App

**Please don't litter.  
Help keep Paterson clean!**

**William Rodriguez**

Director of Public Works

**Juan Hernandez**

Municipal Recycling Coordinator

**Recycling Division 973-321-1393**



# PATERSON RECYCLES

LOOK INSIDE  
to see your  
COLOR ZONE

## 2024 Recycling Schedule

### PATERSON RECICLA

### Fechas de Reciclaje 2024

## التكرير في باترسون

### مواعيد التكرير لعام ٢٠٢٤



**THE CITY OF PATERSON WEBSITE: [WWW.PATERSONNJ.GOV](http://WWW.PATERSONNJ.GOV)**

**CITY OF PATERSON, NJ - Department of Public Works**

**Recycling Division, 76-80 N. Barclay Street, Paterson, NJ 07503.**

**Office Hours: Monday - Friday 7:30 a.m. - 4:00 p.m.**

**Recycling Center: 231 Lawrence Street, Paterson, NJ 07501**

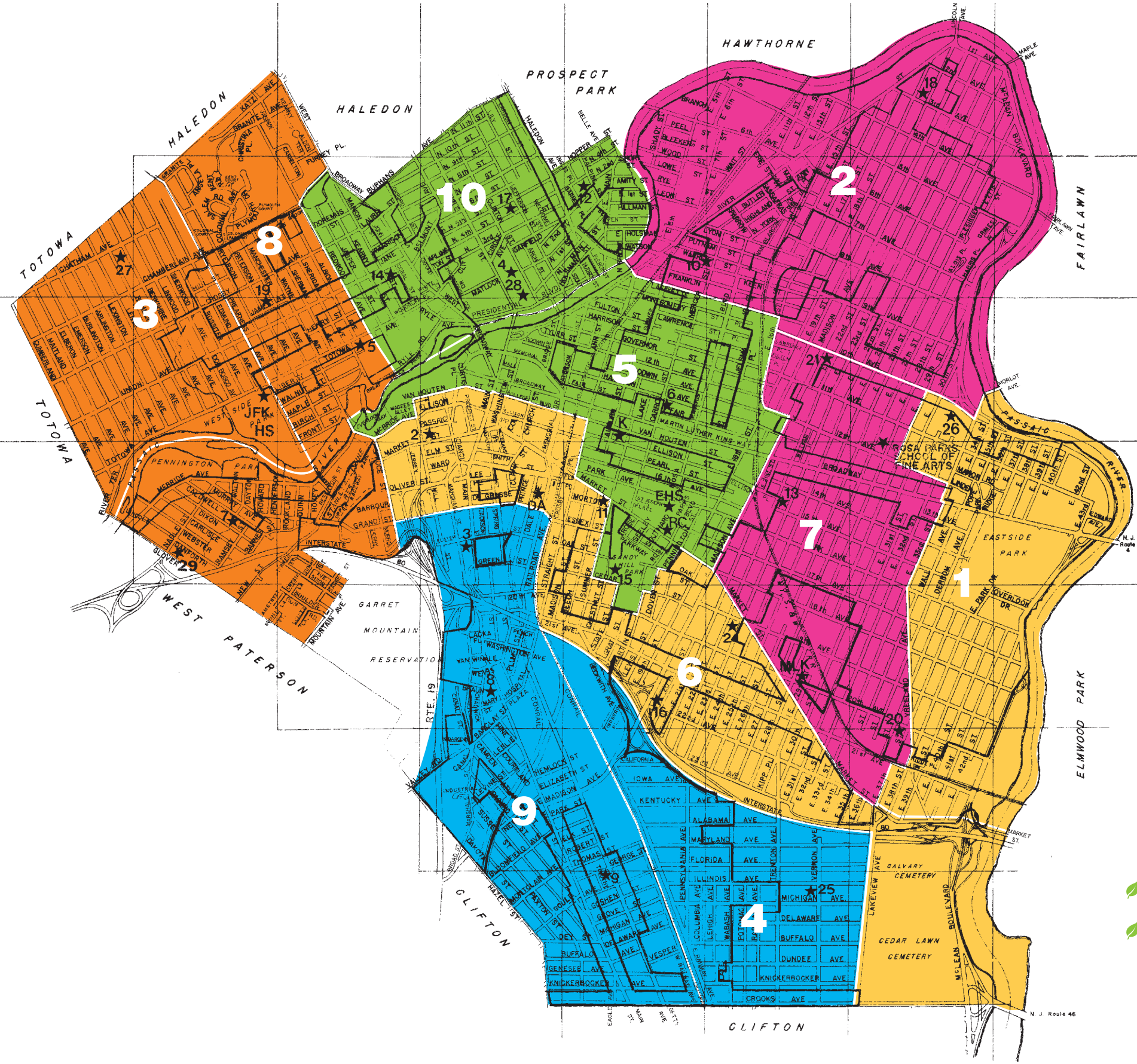


REVISED 1/2024



The City of Paterson provides residents with a 65 gallon recycling cart based upon availability. Residents can contact the Recycling Division at (973) 321-1393 to obtain an application. Only one cart per property will be distributed.

**REMEMBER:** Recycling collection suspensions due to inclement weather will be announced on Optimum Access Channel 77, Verizon Access Channel 32, [www.patersonnj.gov](http://www.patersonnj.gov), [www.facebook.com/PatersonNJCityHall](http://www.facebook.com/PatersonNJCityHall), or Herald News.



## Recycling

Recyclables shall be placed at curbside after 6:00 p.m. the day before, rain or shine!  
Call 973-321-1393 before 11:30 a.m. on your recycling day if your recyclables are missed.

## Reprocesamiento:

Los reciclajes deben ser colocados afuera en la acera a las 6:00 p.m. el día anterior, haga lluvia o haga sol! Llame 973-321-1393 antes de las 11:30 a.m. en su día de reciclaje si sus reciclajes no han sido recogidos.

## تكرير النفايات:

يجب وضع النفايات الصالحة للتكرير على جانب الرصيف بعد الساعة السادسة مساءً من اليوم السابق، ممطر أو مشمس! اتصل على 973-321-1393 قبل الساعة الحادية عشر والنصف صباحاً إذا لم تجمع نفاياتك.

## What color zone are you in?

- EASTSIDE PARK ZONE 1
- RIVERSIDE ZONE 2
- HILLCREST ZONE 3
- LAKEVIEW ZONE 4
- WRIGLEY PARK ZONE 5
- PEOPLE'S PARK ZONE 6
- EASTSIDE ZONE 7
- STONE RD / TOTOWA ZONE 8
- SOUTH PATERSON ZONE 9
- WEST/NORTHSIDE ZONE 10

## Schedule 2024

JANUARY 2024						
S	M	T	W	T	F	S
		2	3	4	5	6
7	8	9	10	11	12	13
14	15	16	17	18	19	20
21	22	23	24	25	26	27
28	29	30	31			

JULY 2024						
S	M	T	W	T	F	S
	1	2	3	4	5	6
7	8	9	10	11	12	13
14	15	16	17	18	19	20
21	22	23	24	25	26	27
28	29	30	31			

✗ No recycling collection due to holiday – January 1, 2024, New Year's Day.  
✗ No recycling collection due to holiday – December 25, 2024, Christmas Day.

FEBRUARY 2024						
S	M	T	W	T	F	S
				1	2	3
4	5	6	7	8	9	10
11	12	13	14	15	16	17
18	19	20	21	22	23	24
25	26	27	28	29		

AUGUST 2024						
S	M	T	W	T	F	S
				1	2	3
4	5	6	7	8	9	10
11	12	13	14	15	16	17
18	19	20	21	22	23	24
25	26	27	28	29	30	31

MARCH 2024						
S	M	T	W	T	F	S
					1	2
3	4	5	6	7	8	9
10	11	12	13	14	15	16
17	18	19	20	21	22	23
24	25	26	27	28	29	30
31						

SEPTEMBER 2024						
S	M	T	W	T	F	S
1	2	3	4	5	6	7
8	9	10	11	12	13	14
15	16	17	18	19	20	21
22	23	24	25	26	27	28
29	30					

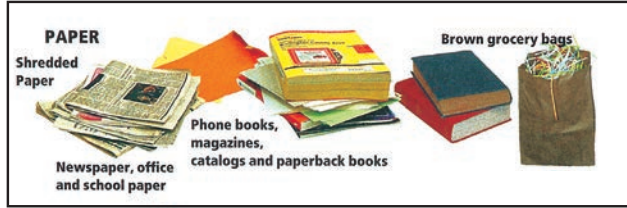
Leaves and cardboard collection week. Bottles collection week. Cardboard only collection week.

## Aluminum, Tin, Glass, and Plastic:

These items can be mixed and must be placed in a reusable container.

Plastic bags of any description, either empty or full of recyclables, will not be accepted.

The items shown here are the materials we accept for recycling. Commingled containers must be no more than 35 lbs. in weight & barrels must have drain holes to drain water from rain or snow.



## Don't be a Clueless Contaminator

Keep these items out of your curbside recycling bin.



**PATERSON RECYCLING CENTER**

THE RECYCLING CENTER IS NOW OPEN FOR THE COLLECTION OF THE FOLLOWING MATERIALS:

- CARDBOARD
- METAL
- TVs & ELECTRONICS
- PAPER (COPY, NEWSPAPER)
- COMMINGLED (BOTTLES, CANS, PLASTIC)
- VEGETATIVE WASTE (LEAVES, SEPARATED GRASS, BUNDLED BRUSH)

LEAVES AND GRASS CAN BE BROUGHT TO THE RECYCLING CENTER ALL YEAR ROUND.

LOCATION: LAWRENCE STREET (Dead End off of Rosa Parks Blvd.)  
HOURS OF OPERATION: MONDAY - FRIDAY (7:30 AM - 4:00 PM)  
Paterson For questions, contact the Recycling Division at (973) 321-1393.



## Recycling Contamination

Occurs when the wrong items, or the right items prepared the wrong way, are placed in curbside recycling bins.

### PLEASE NOTE:

BAGGED LEAVES WILL BE COLLECTED ON YOUR SCHEDULED RECYCLING DAY. LEAVES AND GRASS CLIPPINGS MUST BE PLACED IN A PAPER BAG OR REUSABLE CONTAINER. NO PLASTIC BAGS.

COLLECTION SEASON: APRIL 1, 2024 - DECEMBER 13, 2024

LEAVES AND GRASS CAN BE BROUGHT TO THE RECYCLING CENTER ALL YEAR ROUND.

## Newspaper:

Newspapers must be placed in brown paper bags or bundled with string.

## Periódicos:

Periódicos deben ser colocados en bolsas de papel o amarrados.

### YES

Paperback Books  
Magazines  
Catalogs  
Hard Cover Books (with binding removed)  
All sections of the newspaper including the magazine section

### NO

Gift Wrap Paper  
Poster Paper