

# VISTA PARK

Master Plan | Design Concepts  
May 15, 2018

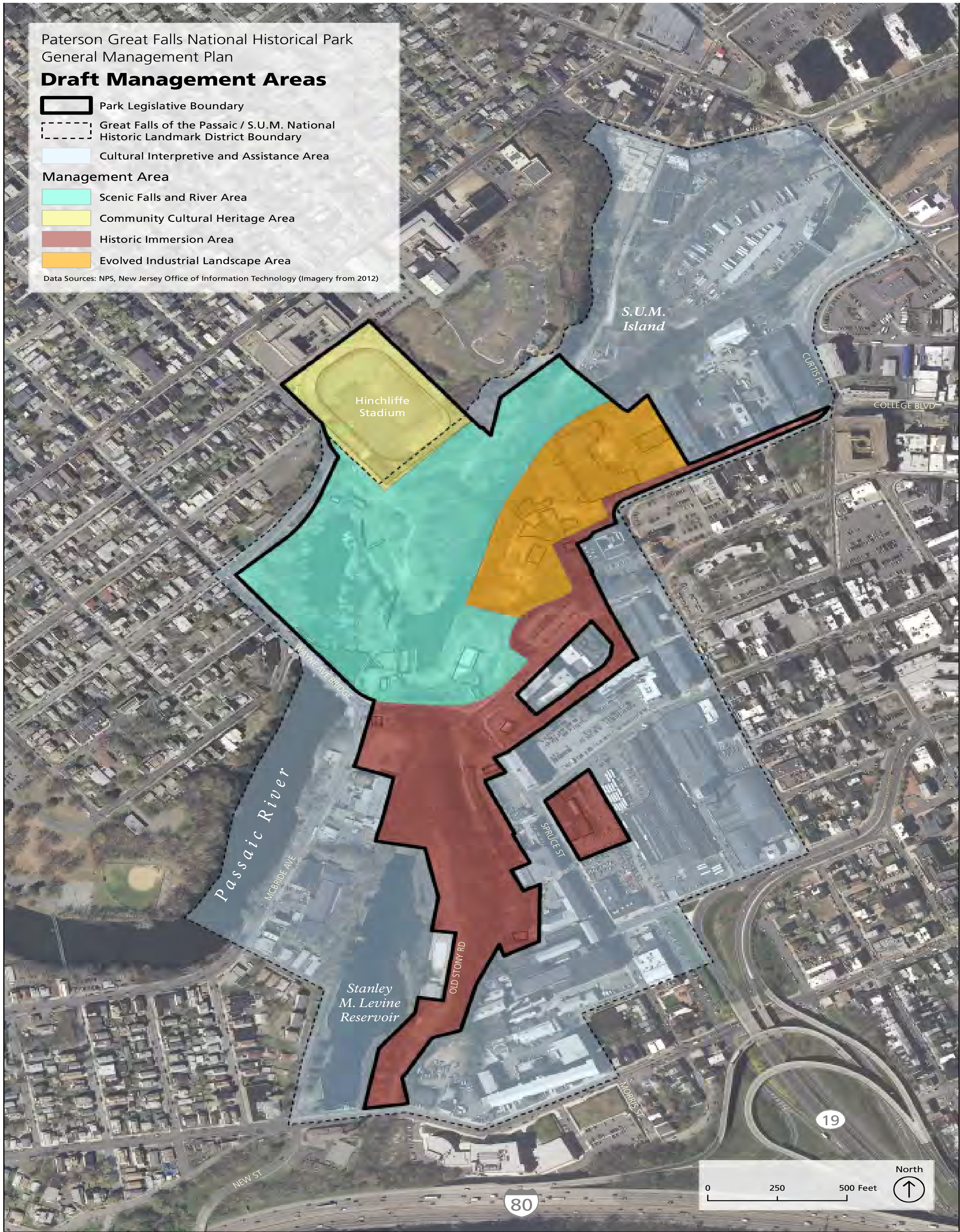




# Vista Park Master Plan | Design Concepts

*A community place  
designed for learning,  
play, and performance,  
with a dynamic history.*





*A Partnership Park for  
the 21st Century*

“The preferred alternative for future management of the park that best fulfills the park’s purpose focuses on the following:

- Visitors will actively explore the entire park, enjoying its natural resources and cultural landscapes for contemporary recreational pursuits while learning about how those resources fueled America’s early industrial development.
- Expanded visitor facilities and interpretive programming within the scenic falls and river area will encourage a wide range of visitor activities focused on actively exploring the Passaic River corridor.
- The raceway technology that supported Alexander Hamilton’s vision for America’s first planned industrial city will be the focus of the visitor experience in the historic district.
- Collaborative efforts of NPS and partners will rehabilitate park resources and provide visitors with opportunities for fun, physical activity, relaxation and events.”



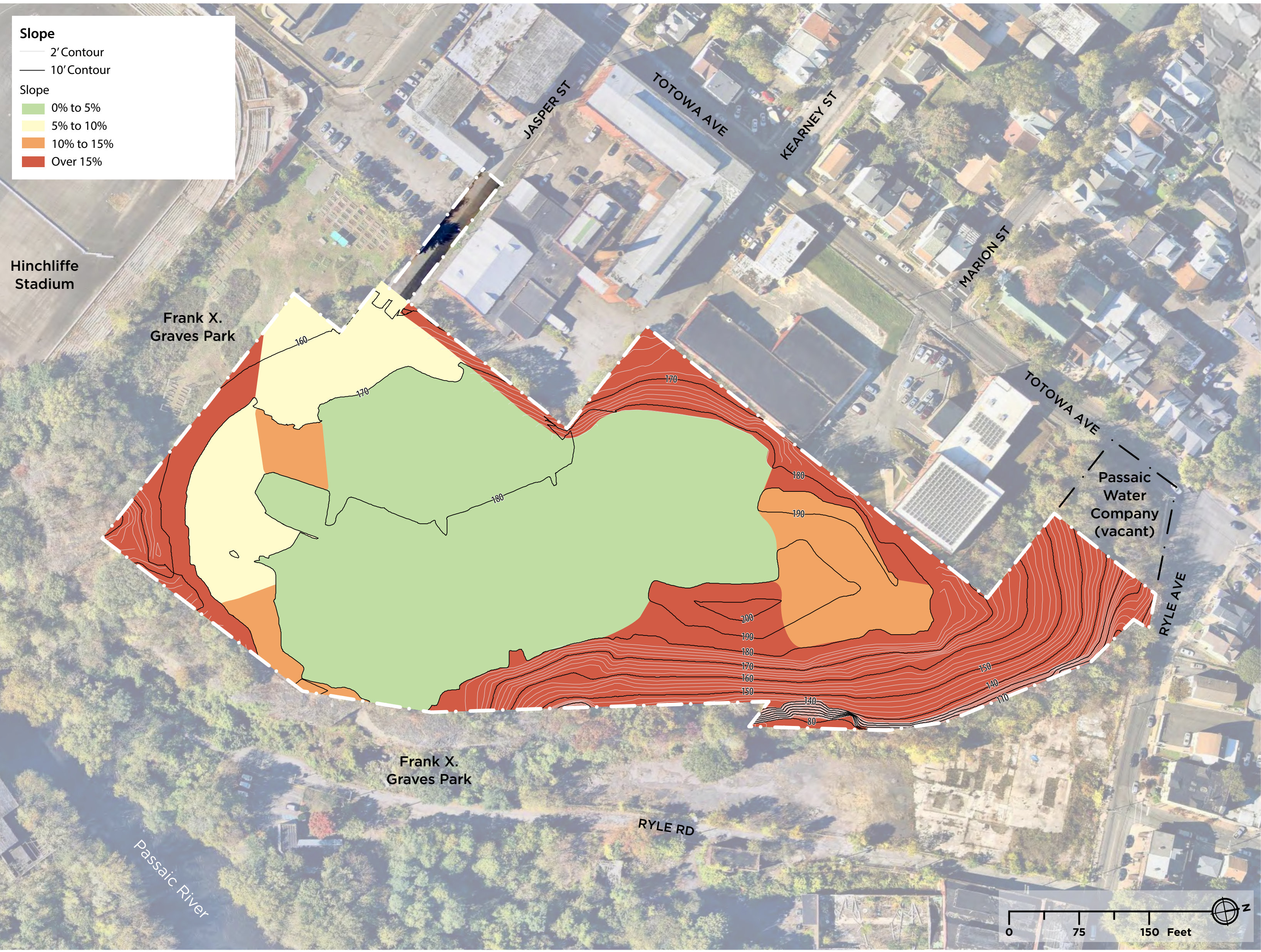
# Vista Park Master Plan | Existing Conditions Summary



BASALT OUTCROP & ESCARPMENT

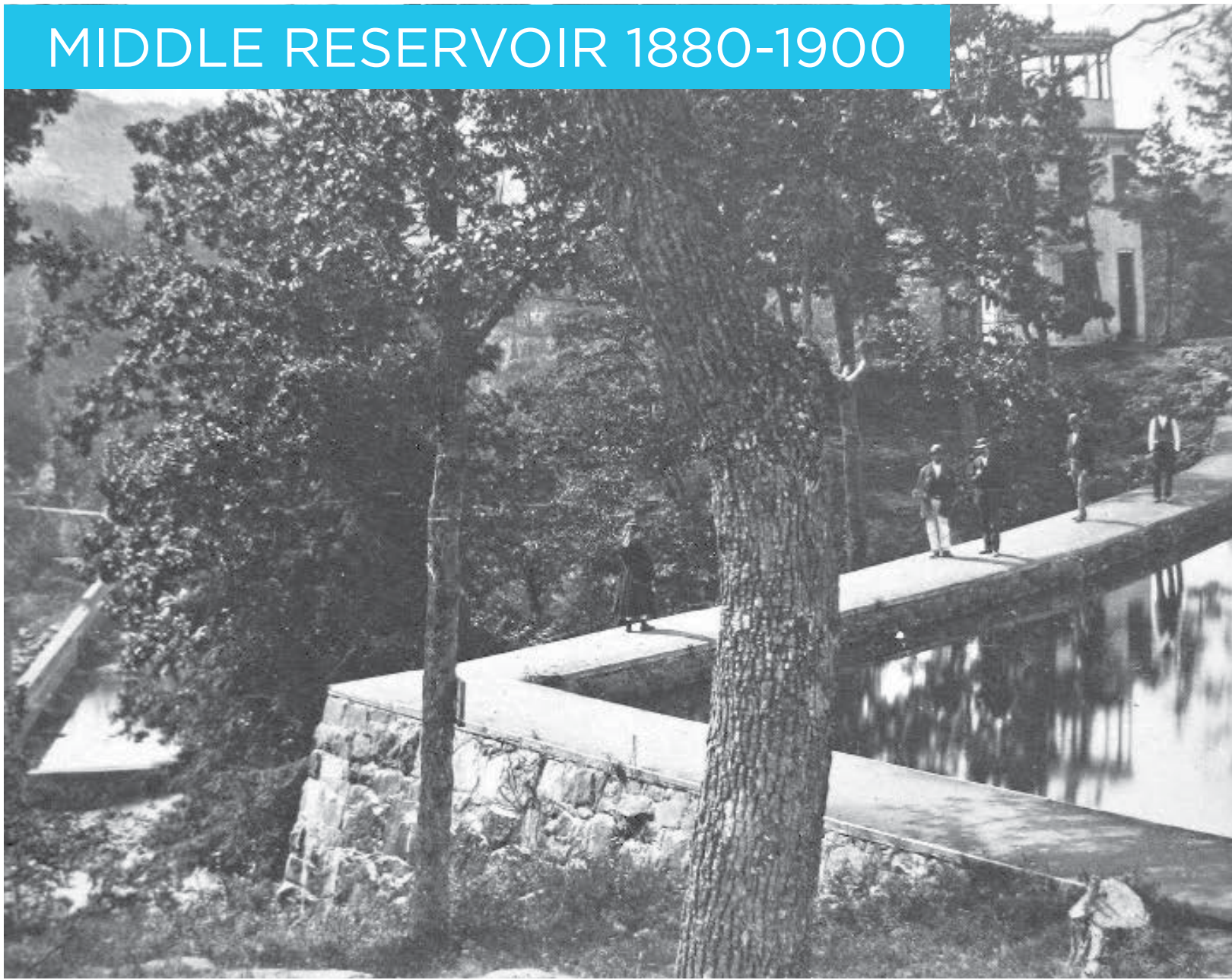
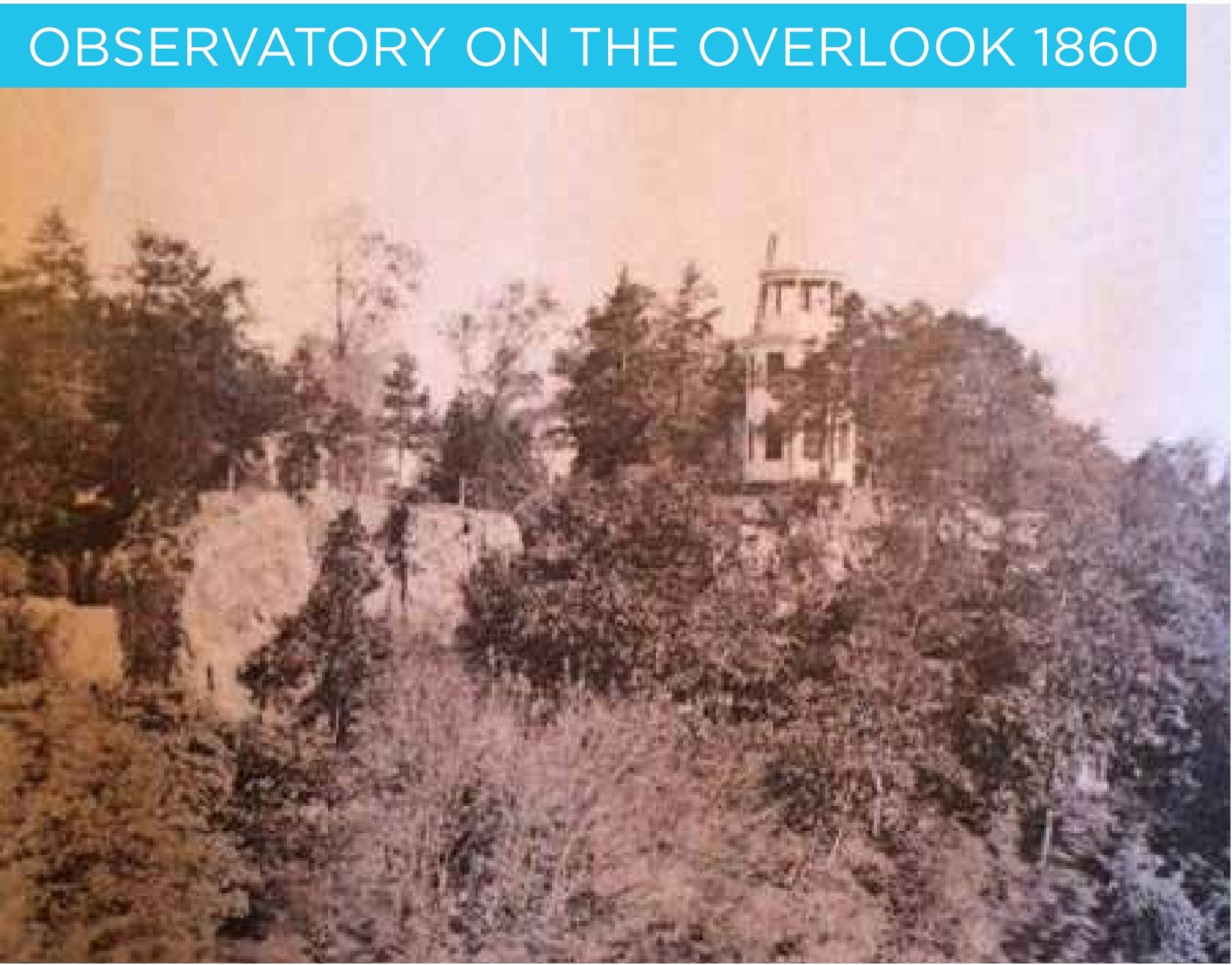


REMNANT OF MIDDLE RESERVOIR WALL





# Vista Park Master Plan | Historic Context Summary



### Cultural Resources

#### Properties Nominated to the National Register of Historic Places

- Great Falls of the Passaic/S.U.M. National Historic Landmark District
- Great Falls of the Paterson - Garret Mountain National Natural Landmark
- Hinchliffe Stadium National Historic Landmark (c. 1925)

#### Properties Determined Eligible for Designation on the New Jersey State Register of Historic Places

- Ryle Avenue Streetscape (35 – 39 Ryle Avenue)

#### City of Paterson Historic Districts

- Great Falls Historic District (official map boundaries being updated by the City of Paterson)

#### Properties Recommended for Designation in the Paterson Register of Municipal Historic Places

- ① Miesch Silk Company Mill (468 Totowa Avenue) c.1909 - 1910)

#### Other Archeological Resources of Potential Significance

- ② Soldiers' and Sailors' Monument Site (completed c. 1869)<sup>1</sup>
- ③ Observatory Site (completed c. 1860)
- ④ Passaic Water Company Totowa Reservoir Site (completed c. 1873)<sup>1</sup>
- ⑤ Passaic Water Company Middle Reservoir Site (completed c. 1868)<sup>1</sup>
- ⑥ Middle Reservoir Wall Ruins
- ⑦ Passaic Water Company Lower Reservoir Site (completed c. 1856)<sup>2</sup>

- Passaic Water Company Historic Transmission Lines <sup>1</sup>

<sup>1</sup> Sergejeff et al, 2005  
<sup>2</sup> Geismar 2014

- Cliff
- Paterson Great Falls National Historical Park



# Vista Park Master Plan | February Synthesis Workshop - Initial Concepts



Concept 1 - Vistas and Nature

Concept 1 showcases the *spectacular panoramic vistas* of the city, Paterson Great Falls, and in the distance – some twelve miles to the east – the Manhattan skyline.



Concept 2 - Nature and Open Lawn

Concept 2's '*studiously simple*' approach creates a *place for inspiration and contemplation* - a unique haven of peace and quiet and community gathering for residents within the city's densely developed urban landscape.



Concept 3 - Sustainability and Recreation

Concept 3 creates a *sustainable and innovative 21st Century garden*. Reflecting on the city's tradition of innovation and entrepreneurial spirit, it embodies the City's history and steps boldly into its contemporary setting.



Concept 4 - Storytelling and Recreation

Concept 4 brings forth the *stories of Paterson Vista Park*. It has remained a destination through time - creating a platform for storytelling, recreation, and community performance.



## Common Elements:

- Existing **topography** graded for functional use and expressive form
- Multiple **access points** with stairs and ramps
- Fun and functional **program** for the surrounding community and national park visitors
- Variety of strategic **planting** methods
- Opportunities for **play, performance,** and **learning**
- **Flexible areas** for community gatherings, exhibitions, and uses by nearby schools
- Focus on safe experience of the **vistas**
- **Interpretation** of history, ecology, and geology
- Places to relax in the **shade**
- Reuse of the existing **parking lot**



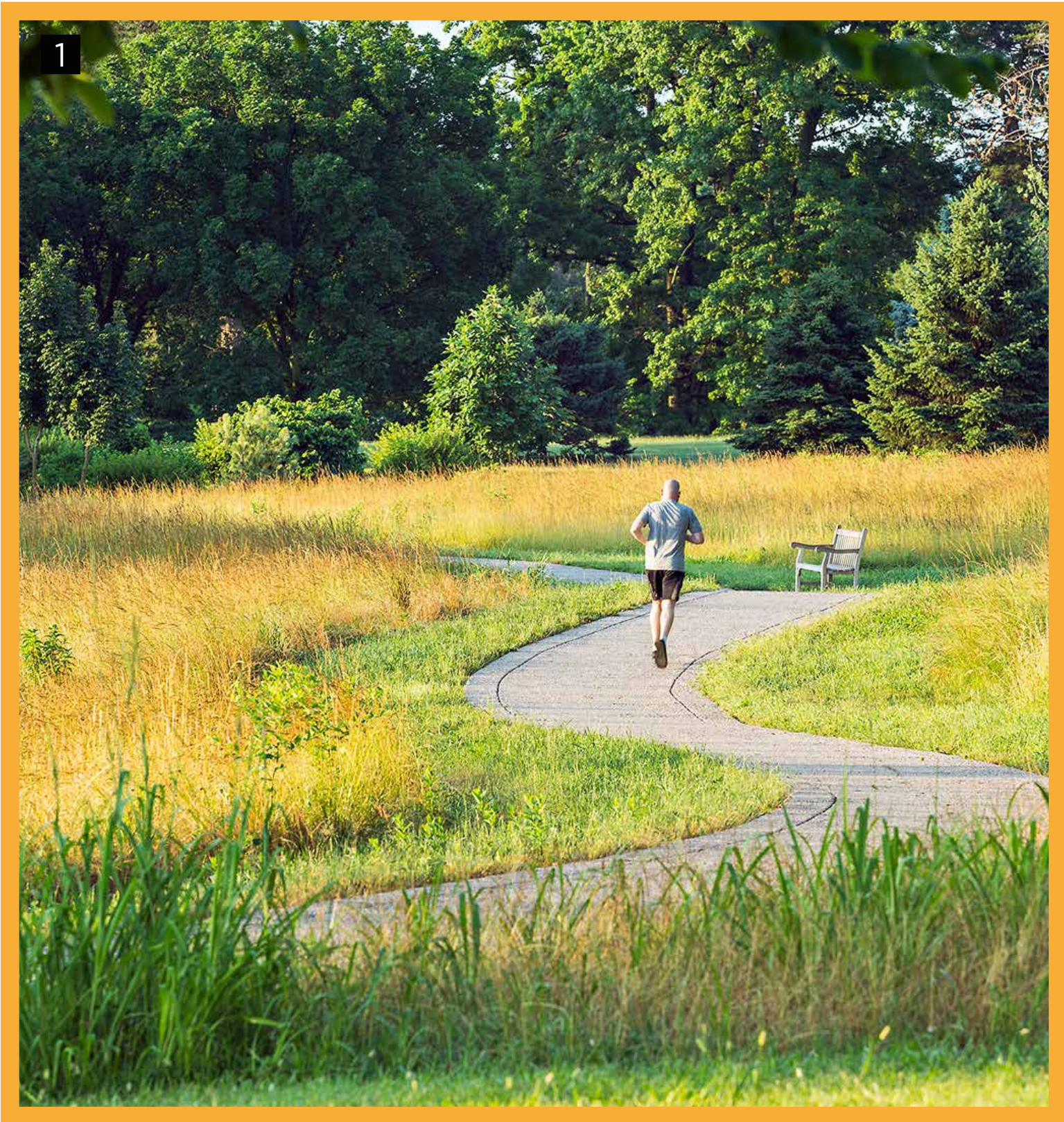


# Vista Park Master Plan | Program Commonalities



## VISITOR CONTACT

- 1 - WELCOME / VISITORS CENTER
- RESTROOMS AND WATER FOUNTAINS
- INTERPRETATION AND ORIENTATION



## TRAILS

- 1 - LOOP TRAIL FOR EXPLORATION OF PARK AND WALKING / JOGGING



## OPEN LAWN

- 1 - OPEN LAWN FOR FLEXIBLE USES AND ACTIVITIES
- SHADE TREES



## PERFORMANCE

- 1 - MEDIUM SCALE PERFORMANCE VENUE WITH FLEXIBLE AND EXPANDABLE USES
- 2 - SMALL DECK PLATFORMS FOR PICNICKING OR PERFORMANCE.



## VISTAS

- 1 - LOOK OUT POINTS
- 2 - OBSERVATION DECKS



## PLAY

- 1 - MAXIMIZE PLAY VALUE WITH TOPOGRAPHY
- 2 - TRADITIONAL PLAYGROUND 'TOT LOT'
- PLAY AREAS FOR DIFFERENT AGE GROUPS



## LEARNING

- 1 - LEARNING GARDEN / AGRICULTURE / GARDEN LAB
- 2 - OUTDOOR CLASSROOM



## PARKING LOT / SPECIAL EVENTS

- 1 - FARMERS AND ARTISANS MARKETS
- 2 - FOOD TRUCKS AND FESTIVALS
- REUSE EXISTING PARKING LOT



# Vista Park Master Plan | Planting



WOODLOT

- 1 -STRUCTURAL PLANTING FROM EXISTING WOODLOT/ URBAN WILD



SHADE TREES

- 1 - SHADE TREES STRATEGICALLY PLANTED IN THE LAWN.



LAWN

- 1 - OPEN LAWN FOR FLEXIBLE USE AND ACTIVITIES



MEADOW

- 1 - INCORPORATE ADAPTABLE, LOW MAINTENANCE SUCCESSIONAL MEADOW PLANTING
- CREATE SUSTAINABLE PLANTING FEATURE AND SLOPE STABILIZATION



FLOWERING TREES

- 1 - PROVIDES SEASONAL INTEREST AND MULTI- LAYERED CANOPY



EVERGREEN TREES

- 1 - PROVIDES SCREENING, SHADE, AND MULTI- LAYERED CANOPY



# Vista Park Master Plan | Interpretation: History, Ecology, and Geology

GEOLOGY



FAUNA



FLORA



NO-MOW SIGN



EXHIBITION



INTERACTIVE SIGN



WAYFINDING



OBSERVATORY





# Concept Plans



# Vista Park Master Plan | Concept 1 - PLAY ROOM



## Program of Uses

- |                 |                |
|-----------------|----------------|
| VISITOR CONTACT | VISTA          |
| TRAILS          | LEARNING       |
| OPEN LAWN       | PLAY           |
| PERFORMANCE     | SPECIAL EVENTS |



## Planting

- |                 |   |
|-----------------|---|
| WOODLOT         |  |
| SHADE TREES     |   |
| LAWN            |  |
| MEADOW          |   |
| FLOWERING TREES |   |



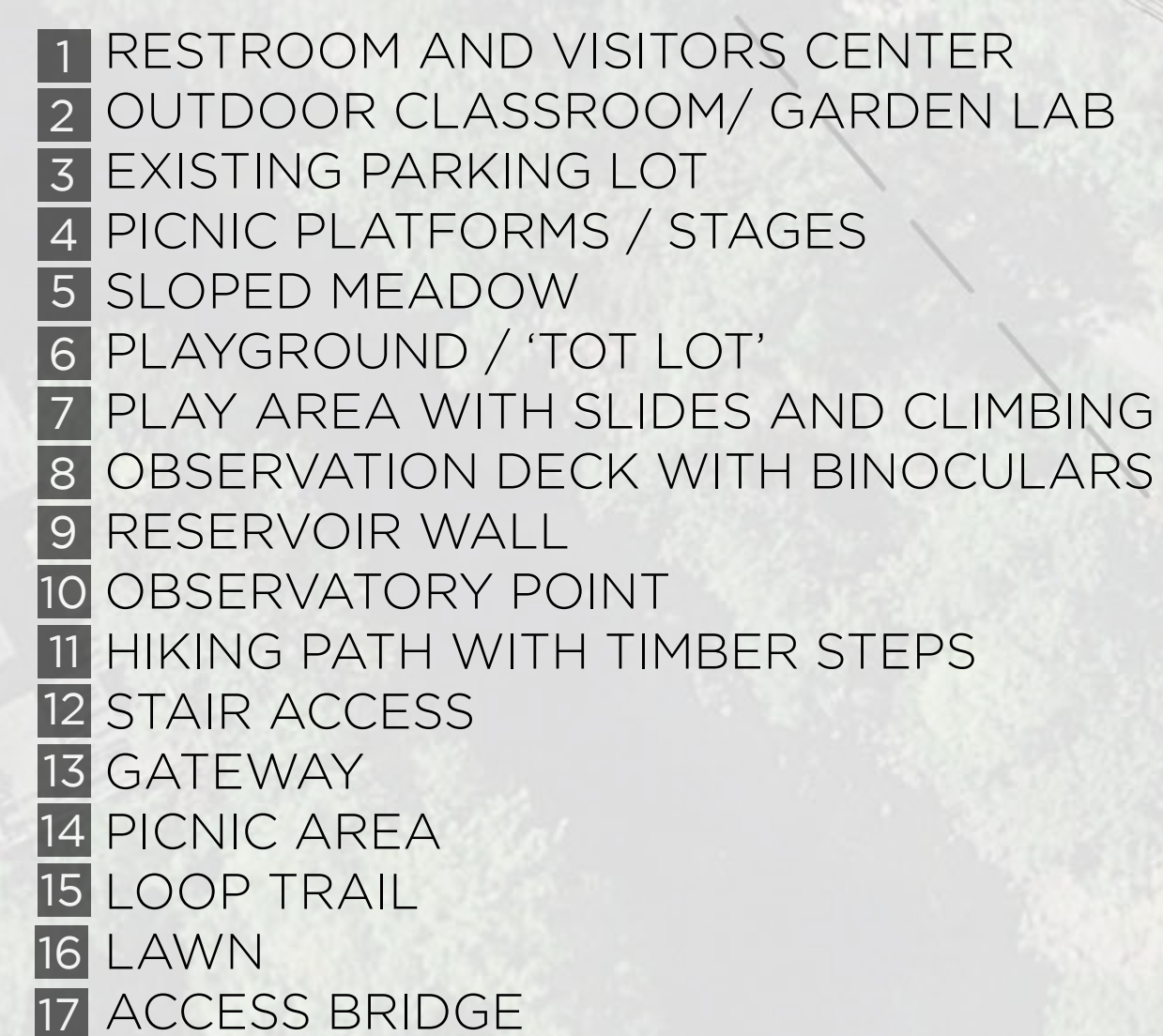
# Vista Park Master Plan | Concept 1 - PLAY ROOM



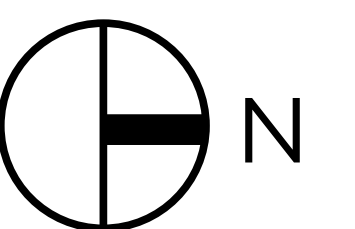
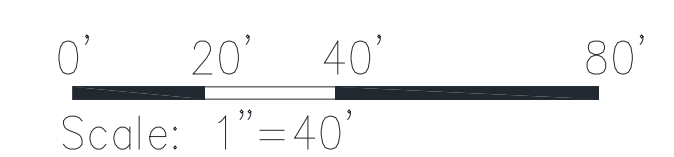
## Concept 1 - PLAY ROOM

- Emphasizes a variety of play spaces including a challenge play area with large slides and climbing, plus traditional playgrounds and 'tot-lot'
- Maximizes open lawn space
- Minimizes pavement and built hardscape
- Allows for passive recreation and small scale performance on picnic platforms/ mini stages
- Offers spectacular vistas from observation decks with binoculars

## LEGEND

- 
- 1 RESTROOM AND VISITORS CENTER
  - 2 OUTDOOR CLASSROOM/ GARDEN LAB
  - 3 EXISTING PARKING LOT
  - 4 PICNIC PLATFORMS / STAGES
  - 5 SLOPED MEADOW
  - 6 PLAYGROUND / 'TOT LOT'
  - 7 PLAY AREA WITH SLIDES AND CLIMBING
  - 8 OBSERVATION DECK WITH BINOCULARS
  - 9 RESERVOIR WALL
  - 10 OBSERVATORY POINT
  - 11 HIKING PATH WITH TIMBER STEPS
  - 12 STAIR ACCESS
  - 13 GATEWAY
  - 14 PICNIC AREA
  - 15 LOOP TRAIL
  - 16 LAWN
  - 17 ACCESS BRIDGE

10' CONTOUR INTERVAL





# Vista Park Master Plan | Concept 2 - PERFORMANCE ROOM



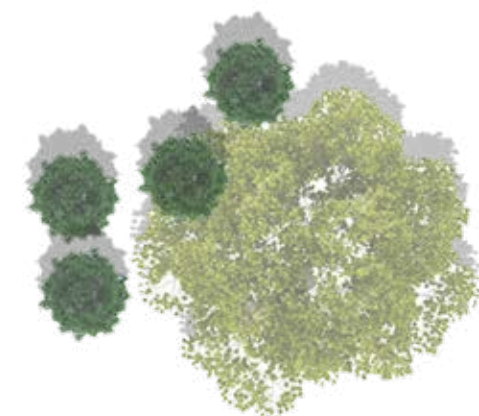
## Program of Uses

- VISITOR CONTACT
- TRAILS
- OPEN LAWN
- PERFORMANCE
- VISTA
- LEARNING
- PLAY
- SPECIAL EVENTS



## Planting

- WOODLOT
- SHADE TREES
- LAWN
- MEADOW
- FLOWERING TREES





# Vista Park Master Plan | Concept 2 - PERFORMANCE ROOM

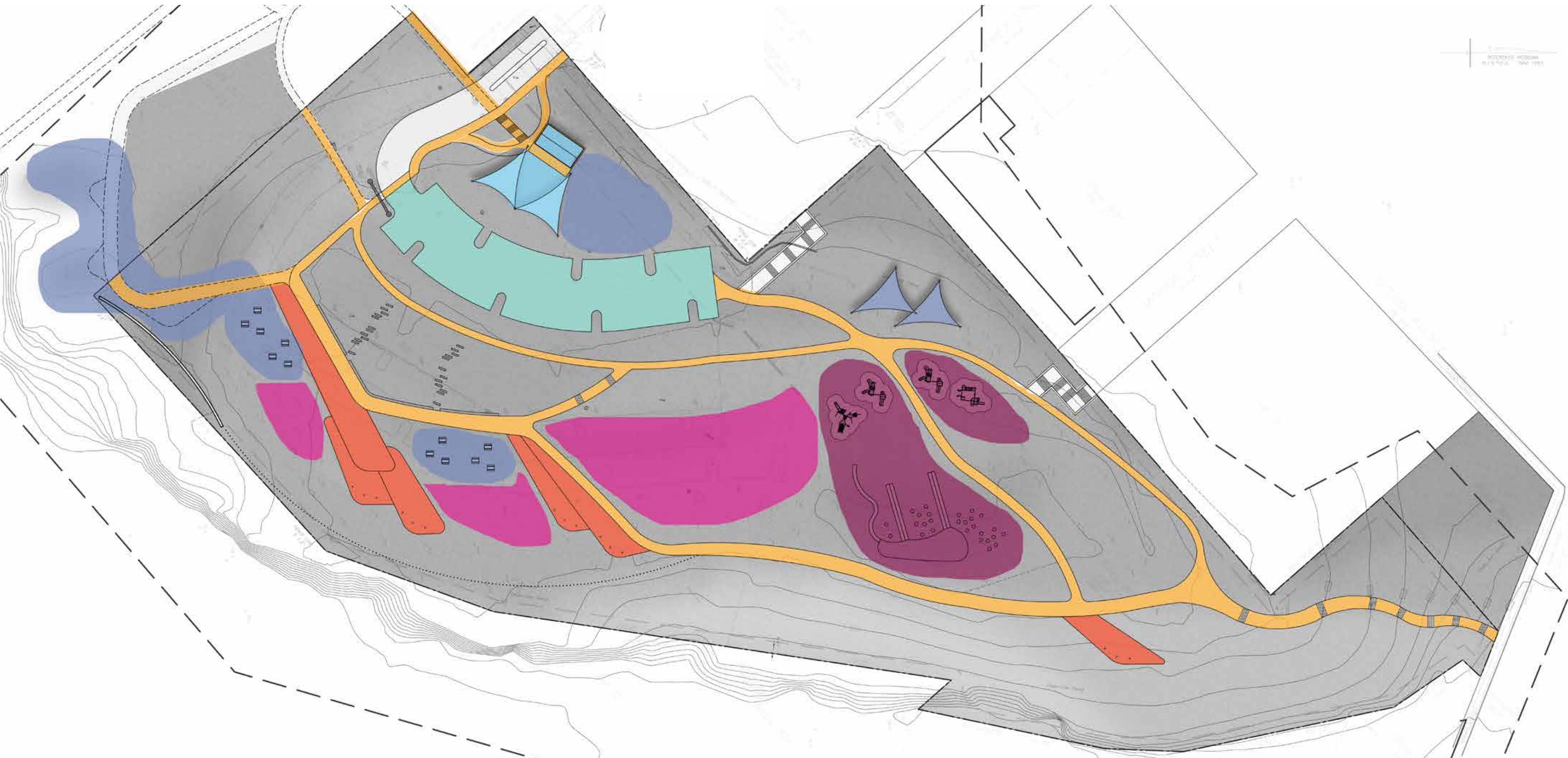


- Concept 2 - PERFORMANCE ROOM**
- Emphasizes a community performance venue which delivers flexible and expandable use of an open air pavilion for performances or exhibitions
  - Maximizes wooded areas and tree planting
  - Strikes a balance between hardscape and planted areas
  - Provides playgrounds, 'tot-lot', and areas for picnic and outdoor classrooms
  - Offers spectacular vistas from observation decks with binoculars

- LEGEND**
- 1 RESTROOM AND VISITORS CENTER
  - 2 OUTDOOR CLASSROOM/ GARDEN LAB
  - 3 EXISTING PARKING LOT
  - 4 SLOPED MEADOW
  - 5 LAWN SEATING
  - 6 OPEN AIR PAVILION
  - 7 OBSERVATION DECK WITH BINOCULARS
  - 8 RESERVOIR WALL
  - 9 OBSERVATORY POINT
  - 10 HIKING PATH WITH TIMBER STEPS
  - 11 STAIR ACCESS
  - 12 GATEWAY
  - 13 PICNIC AREA
  - 14 PLAYGROUND / 'TOT LOT'
  - 15 LOOP TRAIL
  - 16 LAWN
  - 17 ACCESS BRIDGE



# Vista Park Master Plan | Concept 3- LEARNING ROOM



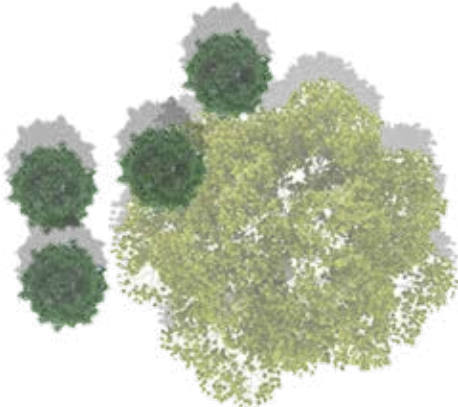
## Program of Uses

- VISITOR CONTACT
- TRAILS
- OPEN LAWN
- VISTA
- LEARNING
- PLAY
- SPECIAL EVENTS



## Planting

- WOODLOT
- SHADE TREES
- LAWN
- MEADOW
- FLOWERING TREES





# Vista Park Master Plan | Concept 3- LEARNING ROOM



**Concept 3 - LEARNING ROOM**

- Emphasizes flexible use space that can be used for outdoor classrooms, garden 'labs' or agricultural exhibits
- Maximizes successional meadow planting and 'no mow' areas
- Pulls main circulation away from the edge
- Provides playgrounds, 'tot-lot', and a large challenge play area with slides and climbing
- Offers spectacular vistas from tiered observation decks with binoculars and interpretative panels

- LEGEND**
- 1 RESTROOM AND VISITORS CENTER
  - 2 OUTDOOR CLASSROOM/ GARDEN LAB
  - 3 EXISTING PARKING LOT
  - 4 SLOPED MEADOW
  - 5 PLAY AREA WITH SLIDES AND CLIMBING
  - 6 PLAYGROUND / 'TOT LOT
  - 7 OBSERVATION DECK WITH BINOCULARS
  - 8 RESERVOIR WALL
  - 9 OBSERVATORY POINT
  - 10 HIKING PATH WITH TIMBER STEPS
  - 11 STAIR ACCESS
  - 12 GATEWAY
  - 13 PICNIC AREA AND OVERLOOK
  - 14 LOOP TRAIL
  - 15 LAWN
  - 16 ACCESS BRIDGE
  - 17 SEAT WALL



# Vista Park Master Plan | Three Alternative Concepts

COMMENTS:



## Concept 1 - PLAY ROOM

- Emphasizes a variety of play spaces including a challenge play area with large slides and climbing, plus traditional playgrounds and ‘tot-lot’
- Maximizes open lawn space
- Minimizes pavement and built hardscape
- Allows for passive recreation and small scale performance on picnic platforms/ mini stages
- Offers spectacular vistas from observation decks with binoculars



## Concept 2 - PERFORMANCE ROOM

- Emphasizes a community performance venue which delivers flexible and expandable use of an open air pavilion for performances or exhibitions
- Maximizes wooded areas and tree planting
- Strikes a balance between hardscape and planted areas
- Provides playgrounds, ‘tot-lot’, and areas for picnic and outdoor classrooms
- Offers spectacular vistas from observation decks with binoculars



## Concept 3 - LEARNING ROOM

- Emphasizes flexible use space that can be used for outdoor classrooms, garden ‘labs’ or agricultural exhibits
- Maximizes successional meadow planting and ‘no mow’ areas
- Pulls main circulation back from the edge
- Provides playgrounds, ‘tot-lot’, and a large challenge play area with slides and climbing
- Offers spectacular vistas from tiered