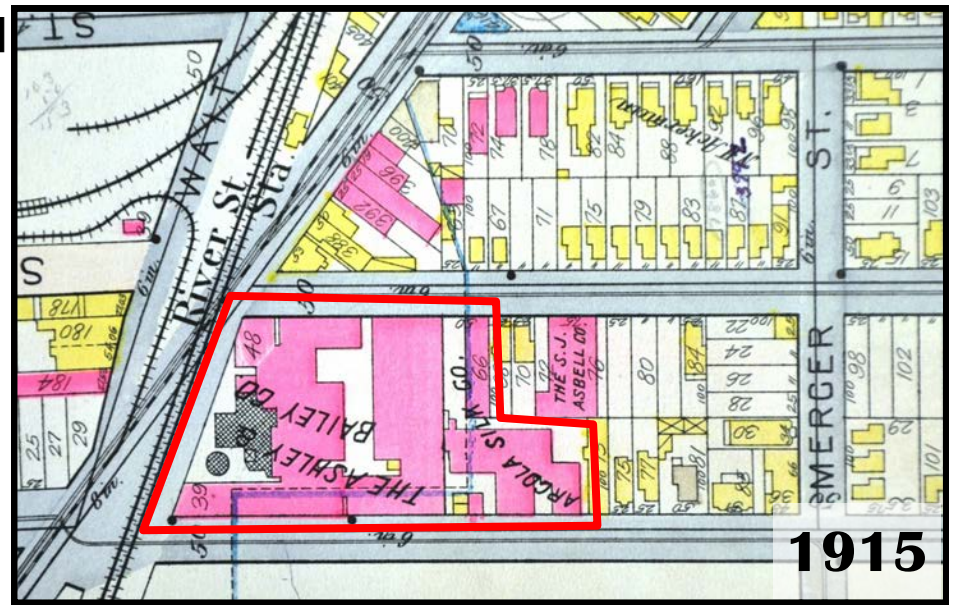
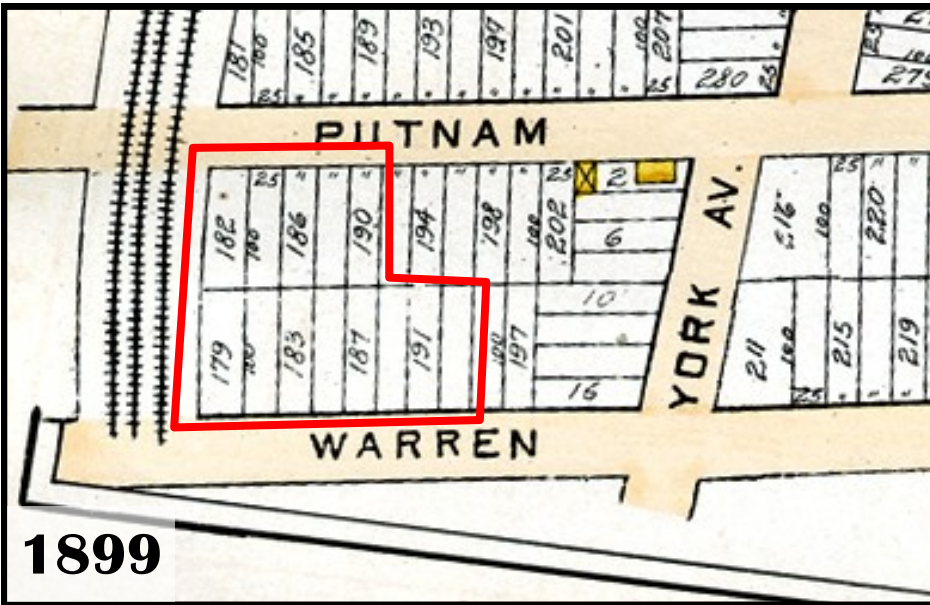
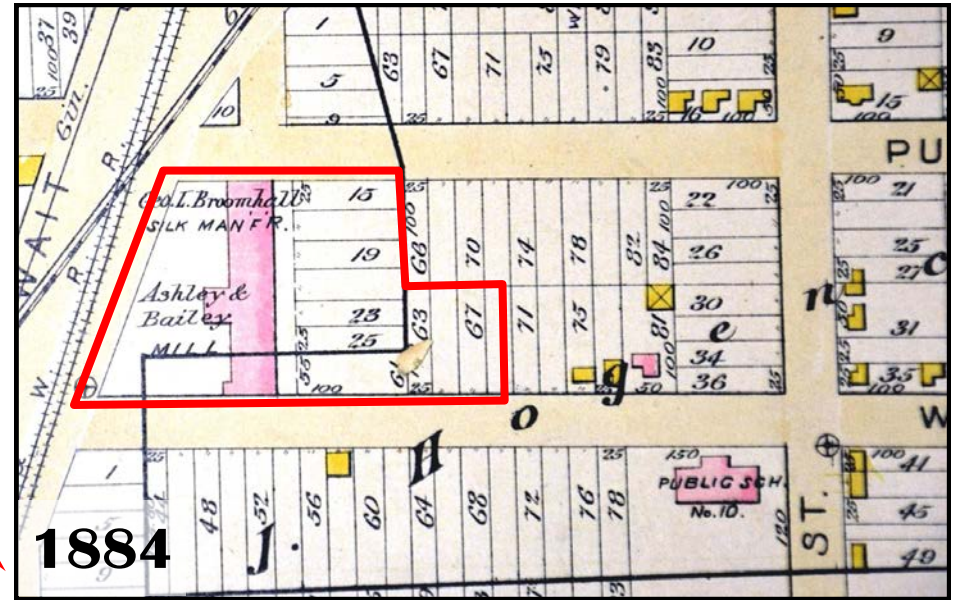
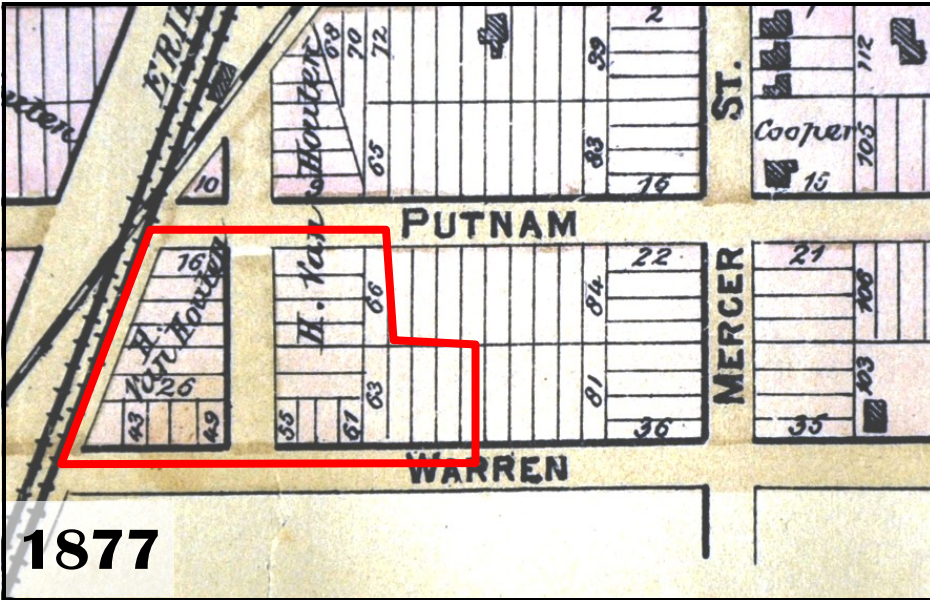


ASHLEY & BAILEY SILK COMPANY
(WASHINGTON SILK DYEING & FINISHING)

Various addresses, Warren St & Putnam St, Paterson, NJ
B 2901 L 01, 02, 13
Site Development Maps 1877, 1884, 1899, 1915



**ASHLEY & BAILEY SILK COMPANY
(WASHINGTON SILK DYEING & FINISHING)**

Various addresses, Warren St & Putnam St, Paterson, NJ
B 2901 L 01, 02, 13
Site Development Maps, 1931, 2006, 2010

