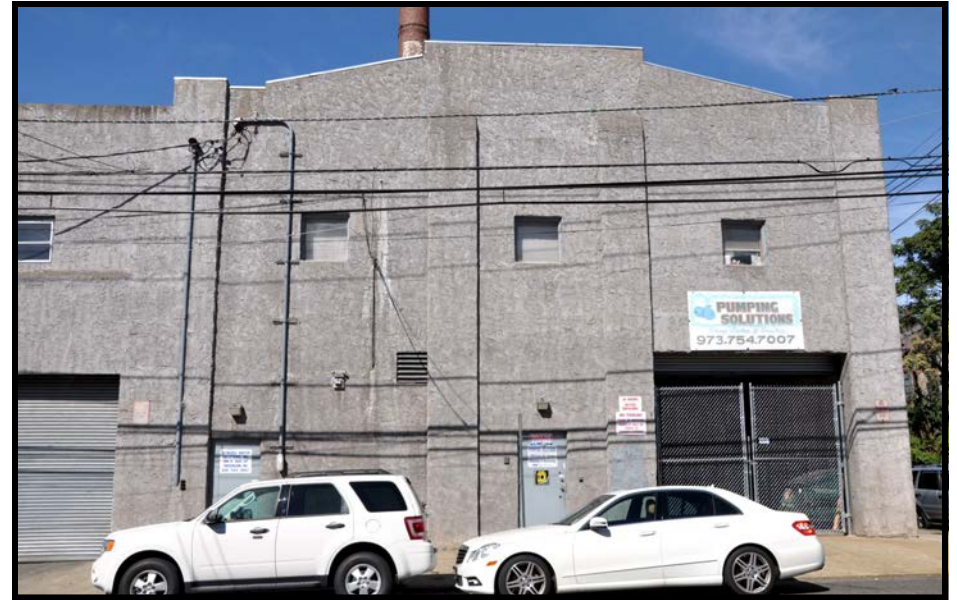


**SUSQUEHANNA SILK & DYEING CO.**  
196-202 East 16th St., Paterson, NJ B 2810 L 06  
Photographs, historic / contemporary



**SUSQUEHANNA 1:** Oblique overview of complex looking southwest from corner of 16th St. and 7th Ave.



**SUSQUEHANNA 2:** View of east elevation of Dye House running the 7th Ave. block between 15-16th St., looking from across 16th St.



**SUSQUEHANNA 3:** View of east elevation of service building adjacent to Dye House, looking southwest from across 16th St..



**SUSQUEHANNA 4:** oblique overview of north elevation of Dye House running the 7th Ave. block between 15-16th St., looking from across corner of 16th St. and 7th Ave.



**SUSQUEHANNA SILK & DYEING CO.**  
196-202 East 16th St., Paterson, NJ    B 2810 L 06  
Photographs, historic / contemporary



**SUSQUEHANNA 5:** oblique overview of north elevation of Dye Houses running the 7th Ave. block between 15-16th St., looking from across corner of 15th St. and 7th.



**SUSQUEHANNA 6:** oblique overview of west elevation of Dye House running the along 15th St., looking southeast from across corner of 15th St. and 7th.



**SUSQUEHANNA 7:** Oblique overview looking northeast showing the Boiler House / Steam Plant likely added to the Susquehanna operation during a plant expansion in the 1940s.



**SUSQUEHANNA 8:** Detail showing full height of the Susquehanna smokestack, looking southeast from 7th Ave.



**SUSQUEHANNA SILK & DYEING CO.**  
196-202 East 16th St., Paterson, NJ    B 2810 L 06  
Photographs, historic / contemporary



**SUSQUEHANNA 9:** overview looking north from across 7th Ave. showing the Boiler House / Steam Plant's south side.



**SUSQUEHANNA 10:** overview looking east from across 15th St. showing the Boiler House / Steam Plant's west side.



**SUSQUEHANNA 11:** view looking northwest from across 7th Ave. showing the Boiler House / Steam Plant's south side.



**SUSQUEHANNA 12:** Detail showing full height of the Steam Plant smokestack, looking north from 7th Ave.