

**NATIONAL SILK DYEING, EAST MAIN ST.
6-34 Piercy St., Paterson, NJ B 115 L 01
Photographs, historic / contemporary**



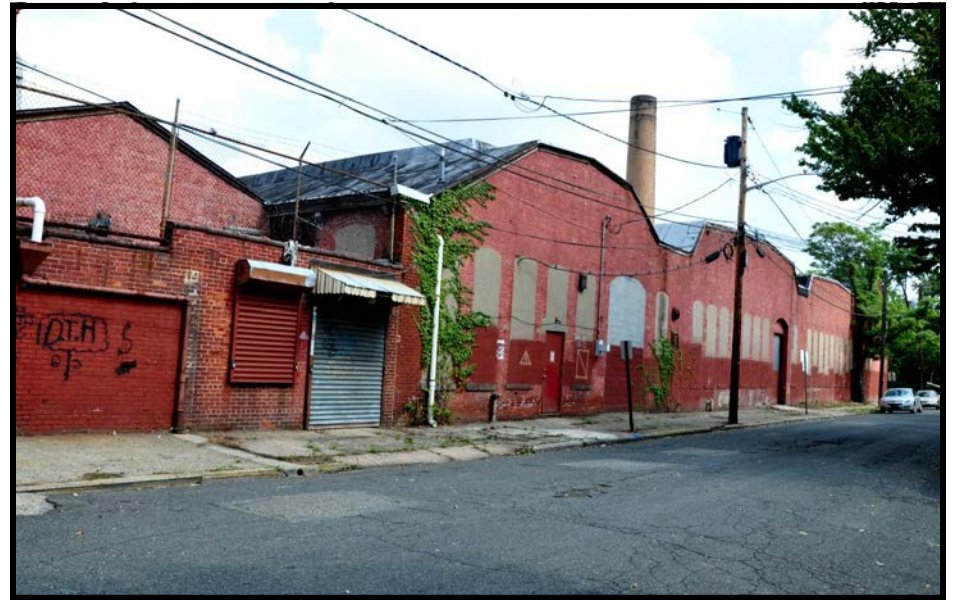
NATIONAL 1: Oblique overview of Dye Houses and Boiler House (right) looking northwest along Piercy St. from corner of Presidential and Piercy.



NATIONAL 2: Oblique overview of Dye Houses, Stripping Room and 1920s mill (left frame), looking northwest along Piercy St. from about mid point of the site.



NATIONAL 3: Oblique overview of Stripping Room, Ribbon Finishing Room and 1920s Finishing mill (left frame), looking northwest along Piercy St.

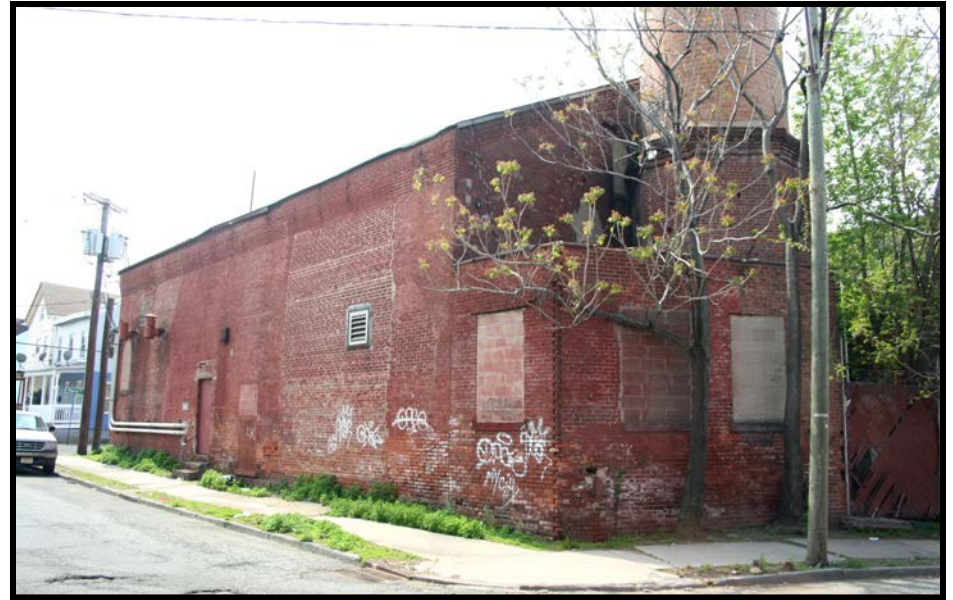


NATIONAL 4: oblique overview of Dye / Weighing Houses, looking southeast along Piercy St from about mid point of the complex.

**NATIONAL SILK DYEING, EAST MAIN ST.
6-34 Piercy St., Paterson, NJ B 115 L 01
Photographs, historic / contemporary**



NATIONAL 5: Oblique view of the Boiler House looking north from the corner of Piercy St. and Presidential Ave.



NATIONAL 6: Oblique view of the Boiler House looking southwest from the corner of Piercy St. and Presidential Ave.



NATIONAL 7: Overview of north side of the complex, looking southwest from East Main St., Boiler House at left frame, and rear of Dye House at right frame.



NATIONAL 8: oblique overview of loading docks and rear of Dye Houses, looking northwest from Presidential Ave.