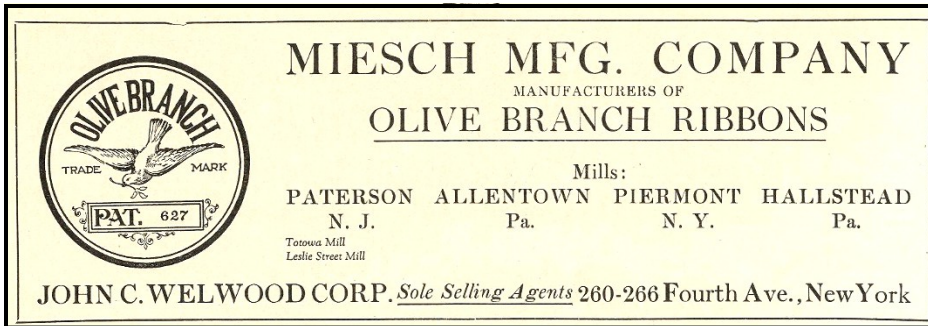


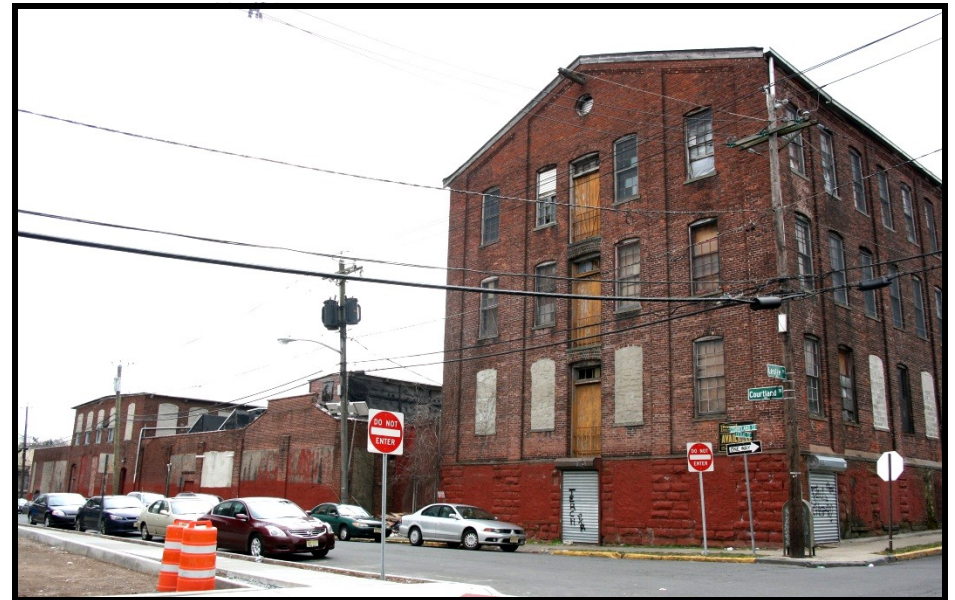
**MIESCH SILK RIBBON MFG. CO.** Courtland St. works  
 52 Courtland Street, Paterson, NJ B 5607 L 01  
 Photographs, historic / contemporary



**MIESCH 1:** Advertisements from 1924 trade journals for the Miesch Olive Branch trade name ribbon products used primarily in the millinery trade [hats].



**MIESCH 2:** oblique overview looking NW at corner of Courtland and Leslie St. The gable end of the original Miesch mill, c1890. Note brownstone first floor (painted red)



**MIESCH 4:** oblique overview looking NW at corner of Courtland and Leslie St. The two-story brick building at left is part of the 1910 expansion, while others to the right were built later. The gable end of the 1890 mill is at right.



**MIESCH 3:** Detail of 1890 mill Courtland St. façade looking N. Note the number of intact double hung windows, central loading doors, central oculus window, stepped corbel detailing and pilaster articulation as character defining features.



**MIESCH SILK RIBBON MFG. CO. Courtland St. works**  
**52 Courtland Street, Paterson, NJ      B 5607 L 01**  
**Photographs, historic / contemporary**



**MIESCH 5:** detail of Leslie St. side, showing two by two fenestration, intact windows, and similar detailing as described in previous photos.



**MIESCH 6:** oblique overview looking SE of corner of Camden and Leslie Streets, showing the c1910 addition along Leslie street.



**MIESCH 7:** detail view looking SW, showing two by two fenestration, open ended eaves and general conditions of the Camden St. addition.



**MIESCH 8:** oblique overview looking SE, showing gable end and Camden St. side of the c1910 addition. The gable end of the original mill is visible at the far end of the street.



**MIESCH SILK RIBBON MFG. CO. Courtland St. works**  
**52 Courtland Street, Paterson, NJ      B 5607 L 01**  
**Photographs, historic / contemporary**



**MIESCH 9:** Oblique view looking SW, showing non contributing concrete block shed on Lot 2, at corner of Camden and Court Streets. This and other structures along Court Street are not included in the boundary of the Miesch mill designation, and are on a separate tax parcel altogether.