

Recycling

Recyclables must be placed at curbside by 6:00 a.m. of your scheduled day, rain or shine!
Call 973-321-1393 before 11:30 a.m. on your recycling day if your recyclables are missed.

Reprocesamiento:

Los reciclajes deben ser colocados afuera en la acera a las 6:00 de la mañana en el día asignado, haga lluvia o haga sol! Llame 973-321-1393 antes de las 11:30 a.m. en su día de reciclaje si sus reciclajes no han sido recogidos.

تكرير النفايات:

يجب وضع النفايات الصالحة للتكرير على جانب الرصيف قبل الساعة السادسة صباحا من موعد جمعها. كما يجب الاتصال تلقونيا قبل الساعة الثانية عشر ظهرا إذا لم تجمع النفايات.

Newspaper:

Newspapers must be placed in brown paper bags or bundled with string.

Periódicos:

Periódicos deben ser colocados en bolsas de papel o amarrados.

NEWSPAPERS:

YES

Paperback Books Junk Mail
Magazines Brown Paper Bags
Catalogs Telephone Books
Hard Cover Books (with binding removed)

All sections of the newspaper including the magazine section

No Gift Wrap Paper, Poster Paper

PERIODICOS:

Periódicos deben ser colocados en bolsas de papel o amarrados.

Schedule

JANUARY 2014

S	M	T	W	T	F	S
			1	2	3	4
5	6	7	8	9	10	11
12	13	14	15	16	17	18
19	20	21	22	23	24	25
26	27	28	29	30	31	

FEBRUARY 2014

S	M	T	W	T	F	S
						1
2	3	4	5	6	7	8
9	10	11	12	13	14	15
16	17	18	19	20	21	22
23	24	25	26	27	28	

MARCH

S	M	T
2	3	4
9	10	11
16	17	18
23	24	25
30	31	

JULY 2014

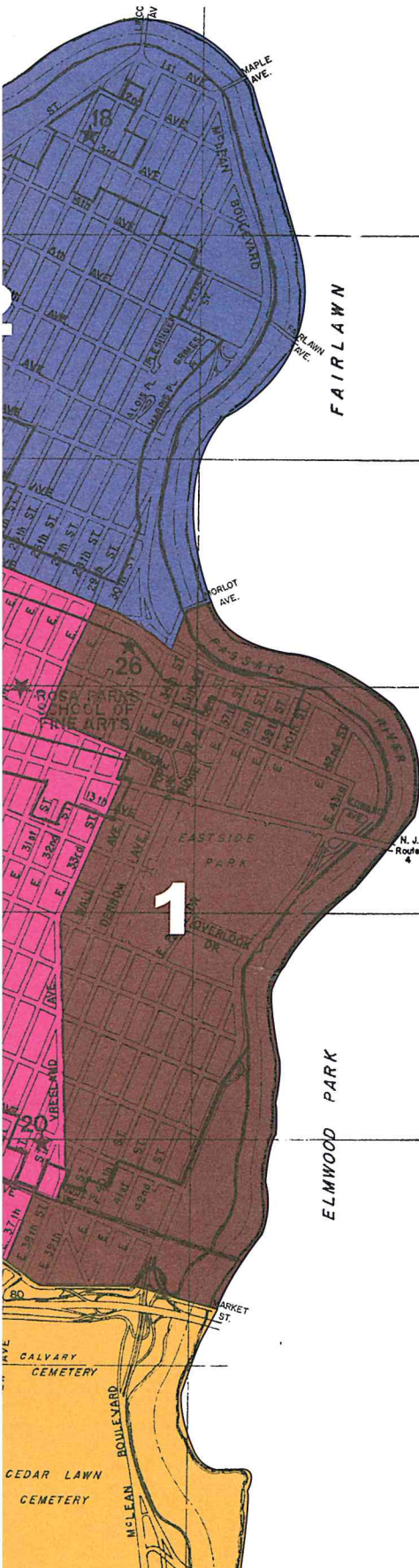
S	M	T	W	T	F	S
		1	2	3	4	5
6	7	8	9	10	11	12
13	14	15	16	17	18	19
20	21	22	23	24	25	26
27	28	29	30	31		

AUGUST 2014

S	M	T	W	T	F	S
					1	2
3	4	5	6	7	8	9
10	11	12	13	14	15	16
17	18	19	20	21	22	23
24	25	26	27	28	29	30
31						

SEPTEMBER

S	M	T
7	8	9
14	15	16
21	22	23
28	29	30



Aluminum, Tin, Glass and Plastic:

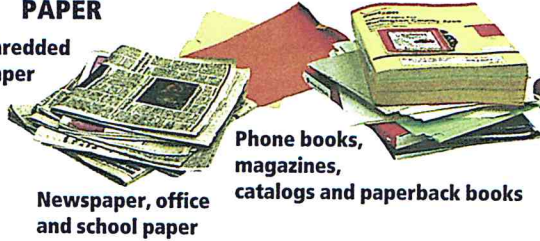
These items can be mixed and must be placed in a re-usable container.

PLEASE DO NOT USE PLASTIC BAGS.

The items shown here are the materials we accept for recycling.
Commingled containers must be no more than 35 lbs. in weight
& barrels must have drain holes to drain water from rain or snow.

PAPER

Shredded
Paper



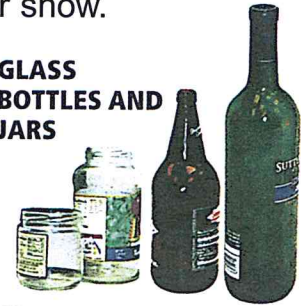
Newspaper, office
and school paper

Phone books,
magazines,
catalogs and paperback books

Brown grocery bags



GLASS BOTTLES AND JARS



ALUMINUM AND STEEL/TIN FOOD AND BEVERAGE CANS



PLASTIC BOTTLES

These symbols indicate the type of plastic
containers that can be placed in your
commingled mix.

Look for these numbers on the bottom.



PETE HDPE V LDPE



Aluminio, Latas, Cristal & Plásticos:

Estos artículos deben ser depositados en un recipiente que se pueda re-utilizar. Favor de no usar bolsas plásticas. Cada vez que se encuentra bolsas plásticas en un camion de reciclaje, se le carga a la cuidad una cantidad adicional.

الألومنيوم والصفائح والزجاج والبلاستيك

هذه المواد يمكن خلطها ووضعها في وعاء خاص يصلح لإعادة استعماله. الرجاء عدم وضعها في أكياس بلاستيك. ففي كل مره يتم العثور على أكياس بلاستيك داخل الشاحنه المخصصه لجمع النفايات الصالحه للتكرير, تتحمل المدينه رسوما اضافيه.

2014

T

F

S

6

13

20

27

2014

APRIL

S

M

T

W

T

F

S

1

7

14

21

28

2014

S

M

T

W

T

F

S

4

11

18

25

2014

MAY

S

M

T

W

T

F

S

1

8

15

22

29

2014

S

M

T

W

T

F

S

1

8

15

22

29

2014

JUNE

S

M

T

W

T

F

S

1

8

15

22

29

2014

T

F

S

4

11

18

25

2014

OCTOBER

S

M

T

W

T

F

S

5

12

19

26

2014

S

M

T

W

T

F

S

2

9

16

23

2014

NOVEMBER

S

M

T

W

T

F

S

2

9

16

23

30

2014

S

M

T

W

T

F

S

7

14

21

28

2014

DECEMBER

S

M

T

W

T

F

S

7

14

21

28

COMMON MISTAKES

These items cannot be placed in your recycling container



§151-3 Prohibited Conduct:

Except as set forth in Chapter 150, the owner or occupant of any property, or any employee or contractor of such owner or occupant engaged to provide lawn care or landscaping services, shall not sweep, rake, blow or otherwise place yard waste, unless the yard waste is containerized, in the street. If yard waste that is not containerized is placed in the street, the party responsible for placement of yard waste must remove the yard waste from the street or said party shall be deemed in violation of this ordinance.

§151-5 Violations and Penalties:

Any person(s) who continues to be in violation of the provisions of this ordinance, after being duly notified, shall be subject to a fine not to exceed \$1,250.00.

PLEASE NOTE:

**THAT BAGGED LEAVES WILL BE COLLECTED ON
YOUR SCHEDULED RECYCLING DAY.
LEAVES AND GRASS CLIPPINGS MUST BE PLACED IN
A BIODEGRADABLE BAG OR REUSABLE CONTAINER.**

What color zone are you in?



EASTSIDE PARK ZONE 1



RIVERSIDE ZONE 2



HILLCREST ZONE 3



LAKEVIEW ZONE 4



WRIGLEY PARK ZONE 5



PEOPLE'S PARK ZONE 6



EASTSIDE ZONE 7



STONEY RD / TOTOWA ZONE 8



SOUTH PATERSON ZONE 9



WEST/NORTHSIDE ZONE 10

Vegetative Waste Schedule

Don't treat Christmas trees like trash!

Please place your Christmas Tree curbside along with your other vegetative waste on your recycling day. Please do not put the tree in a plastic bag and remember to remove any lights, garland and/or ornaments



Grass, Brush and Bagged Leaves

Grass clippings, brush and bagged leaves will be collected according to your regularly scheduled recycling day.

Vegetative waste must be placed in a biodegradable bag or reusable container.

Brush must be bundled and tied in no more than (4) foot lengths and no greater than 2" in diameter.



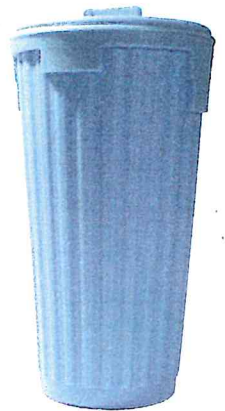
NO stumps or logs will be collected.

You may also use "cut it and leave it" to reduce your grass clippings waste.

For more information on "cut it and leave it" please call the Recycling Hotline at 973-321-1393.

Garbage Collection

Should you have any questions regarding garbage collection, please call 973-321-1488. Please note that garbage must be placed in plastic bags and then into a reusable container for collection.



Clean Communities

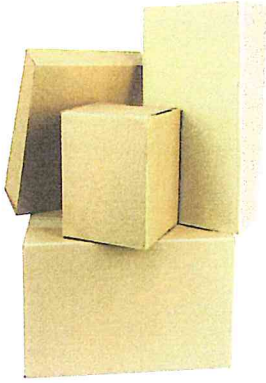
The City of Paterson has a Clean Communities Program to help reduce litter and keep the city clean.

We are seeking volunteer groups to Adopt-a-Spot or Adopt-a-Park to keep that location clean during the year. If anyone is interested in participating in this program, please call **973-321-1393**.



Cardboard

Brown corrugated cardboard boxes must be flattened down, tied in bundles and placed curbside on your recycling day. Cardboard cannot be waxed or contain garbage of any kind.



CARDBOARD:

YES
Corrugated

NO
Gift Boxes
Food Boxes
Chipboard

CARTON:

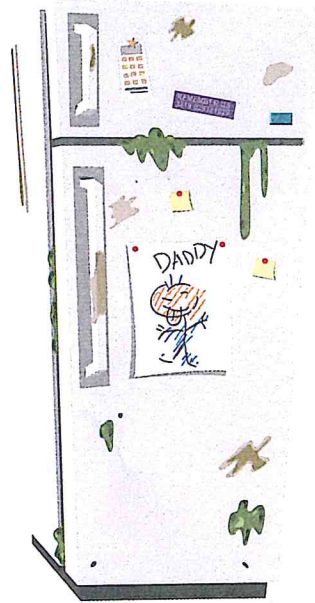
Cajas de color marron deben ser aplastadas, amarradas y colocadas en la acera en el día de reciclaje. Las cajas no pueden contener cera o basura de ninguna clase.

الكرتون:

الصناديق والعلب الكرتونية المموجة و المقواه يجب تكسيدها وبسطها، ثم تحزيمها ووضعها على حافة الرصيف في اليوم المحدد لجمعها. الكرتون يجب ألا يكون مغطى بطبقة من الشمع أو بها زباله من أي نوع.

White Goods

White goods must be placed out on the curb and called in to the Recycling Office to arrange pick-up. Refrigerator doors must be removed.



WHITE GOODS:

YES	NO
Refrigerators	Motorcycles
Stoves	Vehicle Parts
Washers	Furniture
Dryers	
Dishwashers	
Freezers	
Air Conditioners	
Hot Water Heaters	

ELECTRODOMÉSTICOS:

Electrodomésticos deben ser colocados en la acera y se debe llamar a la Oficina de Reciclaje para fijar el día de recolección. A los refrigeradores se les debe sacar las puertas.

البضائع البيضاء:

البضائع البيضاء يجب أن توضع على جانب الرصيف ثم الاتصال بمكتب تكرير النفايات وإبلاغه لتحديد موعد لجمعها. يجب خلع أبواب الثلاجات.

Tires

Tires must be called into the City Yard at **973-321-1490**



Llantas

Para llantas de auto debe llamar a la yarda de la ciudad al **973-321-1490**

الاطارات:

الاطارات يجب الإبلاغ عنها لمركز تجميع النفايات بالمدينة بالاتصال على الرقم: ١٤٨٨-٣٢١-٩٧٣، الرقم الفرعي ٣٣٠٩.

Electronics

As a result of new environmental laws, TVs, computers and other electronics can no longer be collected with regular household trash. Do not put electronics out on your normal garbage pick-up days as it will not be picked up. For TV and Electronics pick up call: **973-321-1393**



You may also bring your recyclables to the City Yard located at 402 East 16th Street and 10th Avenue.

Remember, recycling is the law and you may be subject to \$1,000.00 fine for failure to do so.

Recuerde—reciclar es la ley y usted puede recibir una multa de \$1,000.00 si no la cumple. Usted puede también traer su reciclaje a la Yarda de la Ciudad ubicada en el 402 de la Calle Este 16 y la Avenida 10.



يمكنك أيضا احضار النفايات الصالحة للتكرير الى مركز تجميع النفايات بالمدينة على العنوان

التالي: ٤٠٢ شارع ١٦ شرق مع شارع ١٠

تذكر أن تكرير النفايات هو القانون ومخالفة القانون يمكن أن يعرضك إلى غرامه مالى قدرها \$١٠٠٠ (ألف دولار).