

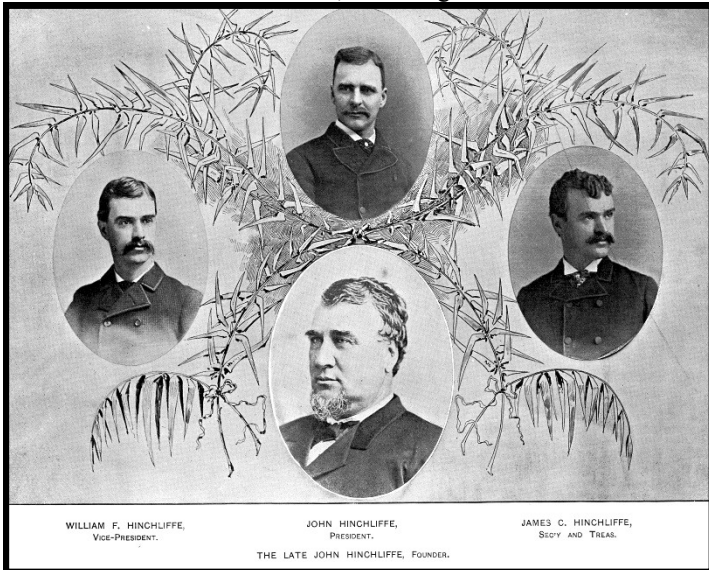
HINCHLIFFE BREWERY

63 Governor Street, Paterson, NJ B 3115 L 08,09

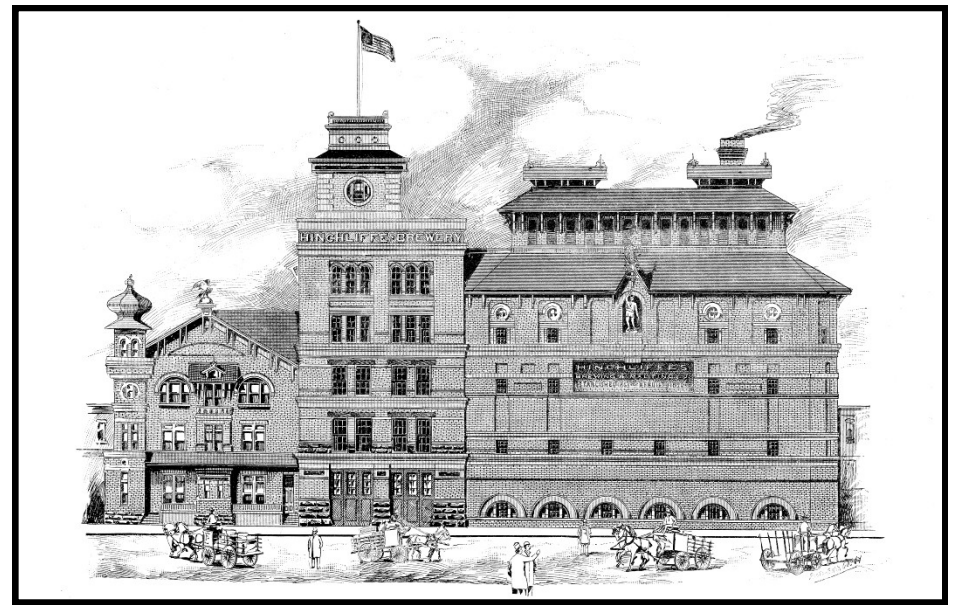
Photographs, historic / contemporary



HINCHLIFFE 1: c.1890 looking NE from corner of Governor and Ann St. Note the comparison of this photo with Hinchliffe 2. The entire Ann St. side shown here was demolished after a fire in 1997, including the turret. See Hinchliffe 4 below.



HINCHLIFFE 3: portraits of the Hinchliffe brothers surrounding their father, John Hinchliffe at center bottom, who started their brewery business in 1865.



HINCHLIFFE 2: 1880s Governor St. façade elevation drawing. The two remaining structures are the large cold storage building on the right, and the center brewery building in the center. The building with turret on the left was destroyed by fire.



HINCHLIFFE 4: newspaper photo showing firemen in the aftermath of a devastating fire that destroyed much of the remaining Hinchliffe brewery complex in 1997.

HINCHLIFFE BREWERY

63 Governor Street, Paterson, NJ B 3115 L 08,09

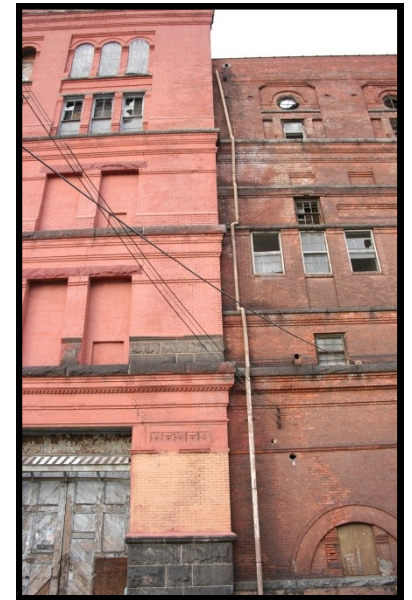
Photographs, historic / contemporary



HINCHLIFFE 5: oblique view looking NE from Ann St. showing Governor St. façades. The turreted building seen in Hinchliffe 1 stood in the vacant area.



HINCHLIFFE 6: detail views looking N from Governor St. façade detailing of the remaining brewery building adjacent to the cold storage building on the right side.



HINCHLIFFE 7: detail view of cold storage building façade, looking NE from Governor St. There is excellent detailing and integrity remaining in this façade.



HINCHLIFFE 8: detail view of original entrances in brewery building, looking NW from Governor St.